

An abstract painting featuring a vibrant yellow background with bold, expressive brushstrokes in blue and red. Faint, vertical text is visible in the upper right quadrant, including the word "CANTWELL" and the word "LANDFORMS".

CANTWELL

LANDFORMS

We are forever in the midst of seismic psychological events. We may choose to present a facade of immutability, but the landscape of our psyches are always roiling, recalibrating as the stuff of life bubbles up through our conscious and unconscious layers. We spend every moment bearing silent witness as the self, entangled in processes of evolution, transforms. The art I create aims to explore the truth of that perpetual transformation.

Kathy Cantwell, 2015



cover: GEOMORPHIC SURVEY, (diptych) Encaustic, 12" x 24" (2015)



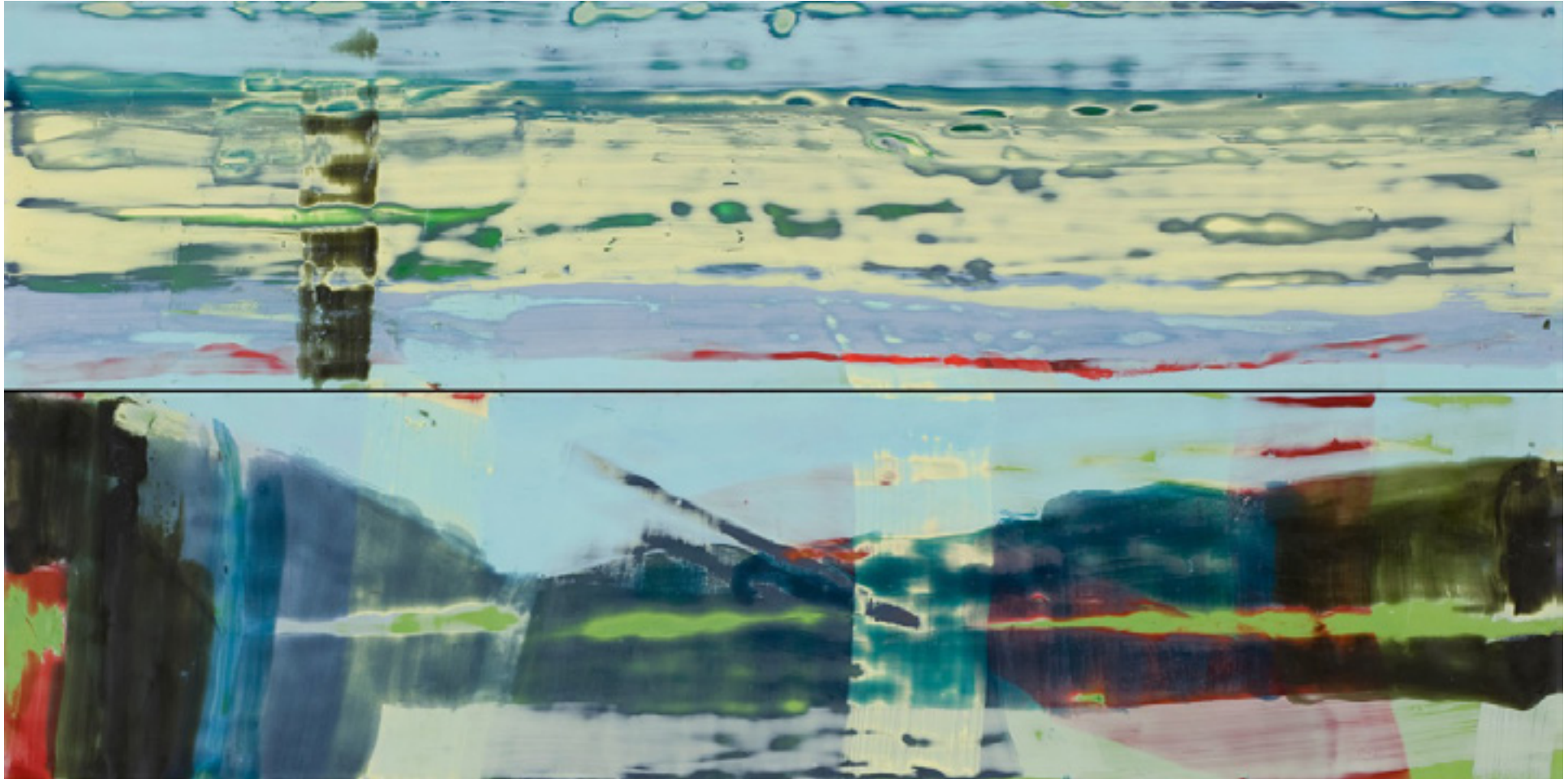
FAR FROM THE CROWD, Encaustic, 30" x 30" (2015)



UNDERTOW, Encaustic, 12" x 12" (2015)



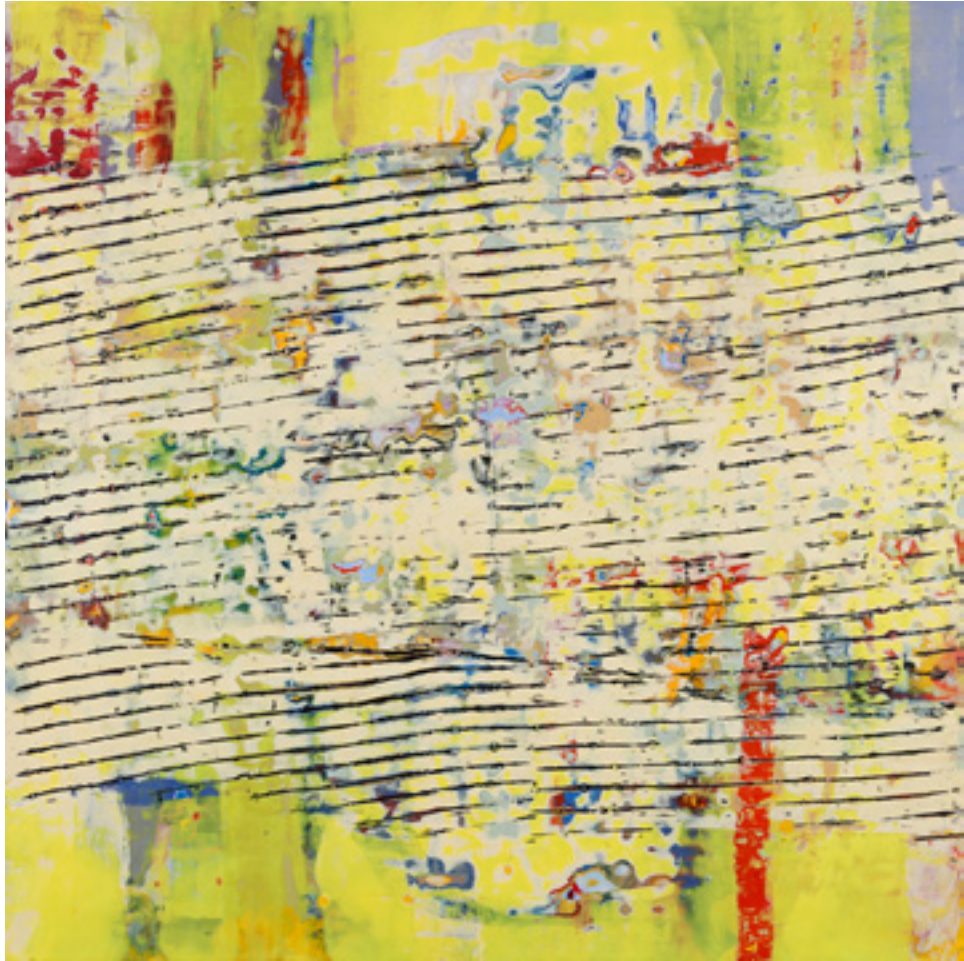
BACK ROAD, Encaustic, 24" x 24" (2015)



FADE AND FLARE (diptych), Encaustic, 12" x 24" (2015)



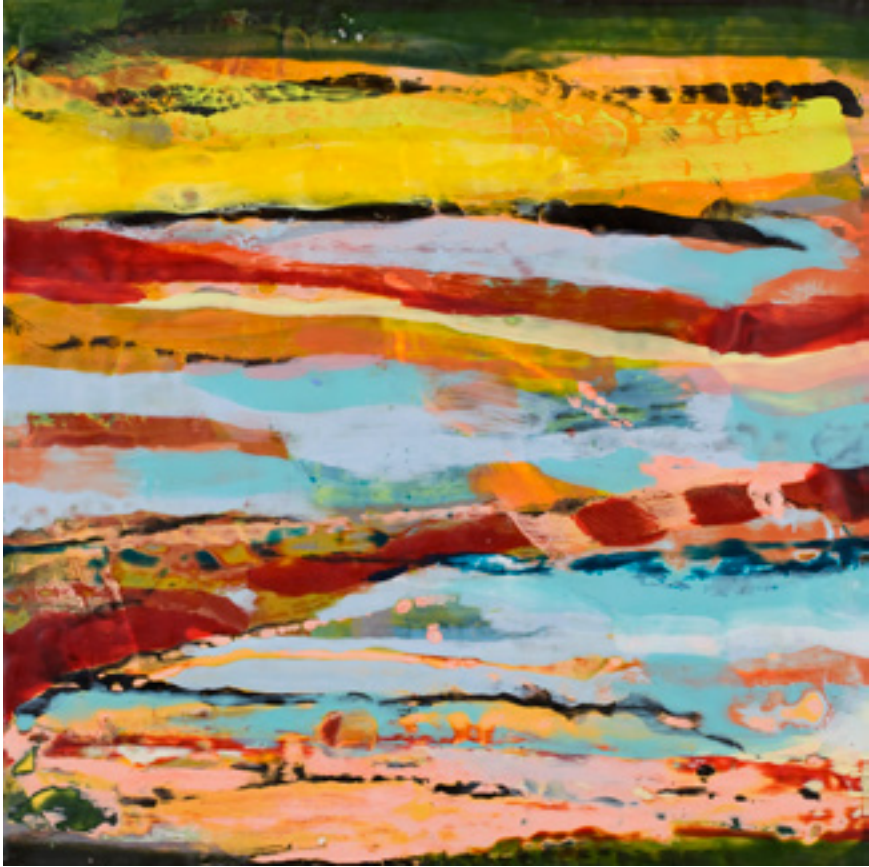
STRAND, (diptych) Encaustic, 12" x 24" (2015)



PASSAGE, Encaustic, 30" x 30" (2015)



PLACE ONCE REMEMBERED, Encaustic, 24" x 24" (2015)



CROSS CURRENTS, Encaustic, 24" x 24" (2015)



ASTROLABE, Encaustic, 12" x 12" (2015)



MOMENTARY TOUCHDOWN, Encaustic, 24" x 24" (2015)

Kathy Cantwell paints primarily in encaustic. An ancient technique also known as hot wax painting, the medium comprises heated beeswax with colored pigments, which are layered then fused onto paneled surfaces. Kathy is drawn to the opaque and translucent qualities of layering that dominate the encaustic technique.

Her recent work has been shown in such group exhibits at Aljira Center for Contemporary Arts, Baruch College's Mishkin Gallery, Montclair State University's George Segal Gallery, the Monmouth Museum, the Edward Hopper House in Nyack, N.Y., and numerous others.

She earned a Bachelor of Fine Arts degree in Painting from C.W. Post College in Greenvale, N.Y.

Formerly a New Yorker, Kathy worked in the entertainment industry by day and painted at night. She found kinship with other artists in Manhattan's bustling downtown arts scene, where she developed her signature of offbeat portraits and interpretive urban landscapes. These wares were showcased at Gallery Asyl in the burgeoning arts neighborhood of Chelsea.

Moving to New Jersey to raise her family in 2002, Kathy began to think beyond her surroundings for subject matter to paint and looked inward for inspiration to transform her work. She was drawn to more abstract thinking. That led her to encaustic.

Kathy lives and works in Maplewood, N.J., with her wife Ann, and their children Jack and Grace.

For information, contact Kathy Cantwell at: kathy.cantwell@gmail.com or (908) 391-9203. To see more of her work please visit. www.kathycantwell.com

© Kathy Cantwell, 2015. All Rights Reserved.

